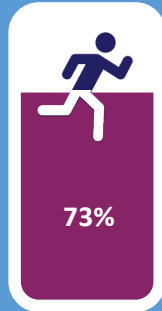


# 触发因素

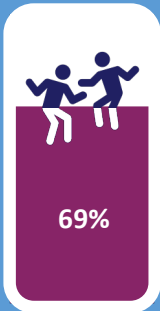
压力



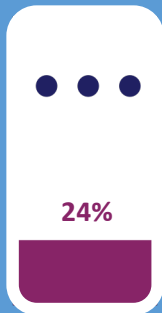
运动/用力



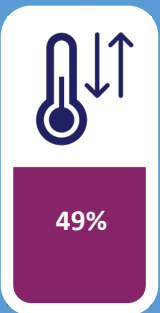
兴奋/不安



其他



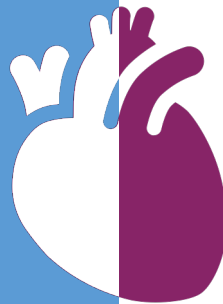
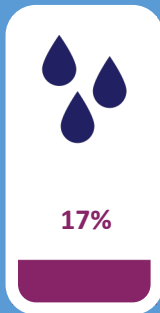
温度



没有已知的触发因素



经期



# 症状

全身疲劳

88%



93%



胸痛

心悸

61%



81%



气促

神经病学\*\*

77%



82%



牵涉性疼痛\*

胃部问题

49%



15%



其他症状

\*背部、肩膀、手臂、颈部和下巴疼痛

\*\*精神错乱、脑雾、视力改变、头昏、头晕

Martha Gulati, Najah Khan, Maria George, Colin Berry, Alaide Chieffo, Paolo G. Camici, Filippo Crea, Juan-Carlos Kaski, Mario Marzilli, C. Noel Bairey Merz

[doi.org/10.1016/j.ijcard.2022.09.047](https://doi.org/10.1016/j.ijcard.2022.09.047)

Posters by Alex Koch

[www.INOCAInternational.com](http://www.INOCAInternational.com)

Scan for paper

